

Fisheye Camera Quick Start Guide

Safety Requirements

Installation Requirements

- Comply with all local electrical safety codes and standards when operating the product.
- Check if the power supply is correct before operating the product.
 - Follow the electrical requirements to power the product. Requirements for selecting a power adapter:
 - The power supply must conform to the IEC 60950-1 and IEC 62368-1 standards.
 - The voltage must meet SELV (Safety Extra Low Voltage) requirements and not exceed ES-1 standards.
 - The power supply must meet LPS requirements and not exceed PS2.
 - We recommend using the power adapter provided with the product.
 - The power supply requirements (such as rated voltage) are subject to the product label.
- Do not connect the product to more than two power supplies unless otherwise specified.
- The product must be installed in a location only professionals can access to avoid the risk of non-professionals becoming injured from accessing the area while the product is in operation. Professionals must have full knowledge of the safeguards and risks when using the product.

Operation Requirements

- Do not open the cover when the product is powered on.
- Do not touch the heat dissipation component of the product.

Packing List

Check the items below to make sure every installation part is included and in proper condition.



1 x Fisheye Camera



2 x Product Literature



1 x L-Shape Wrench



1 x Mounting Template



1 x Package of Screws



1 x Package of Mounting Components



1 x Mounting Plate



1 x Power Drill
(Not Included)



1 x Roll of Electrical Tape
(Not Included)



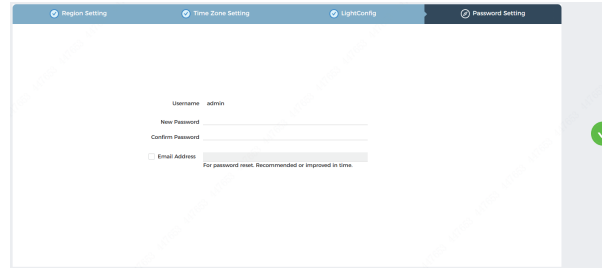
1 x MicroSD Card
(Not Included)



1 x Phillips Head Screwdriver (Not Included)

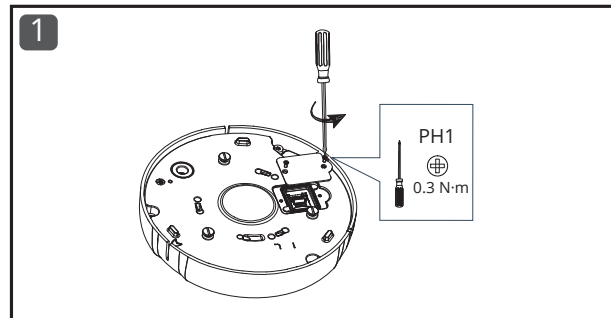
Device Initialization

- 1 Enter the camera's IP address in the browser address bar. Chrome and Firefox are recommended.
- 2 Follow the on-screen instructions to complete the initialization process.

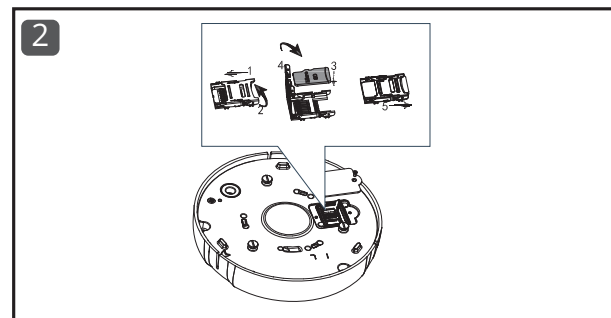


Installation Steps

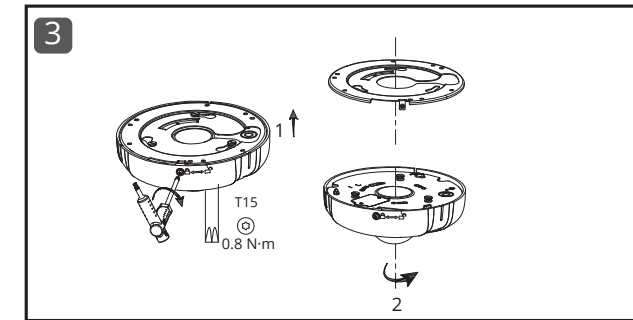
Remove the cover for the MicroSD card slot with a PH-1 Phillips-head screwdriver. Set aside.



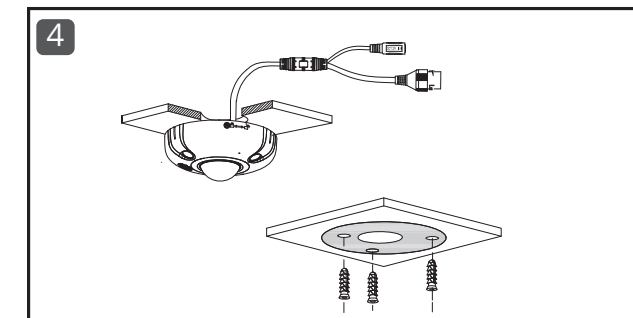
Insert the MicroSD card. Then, reinstall the cover.



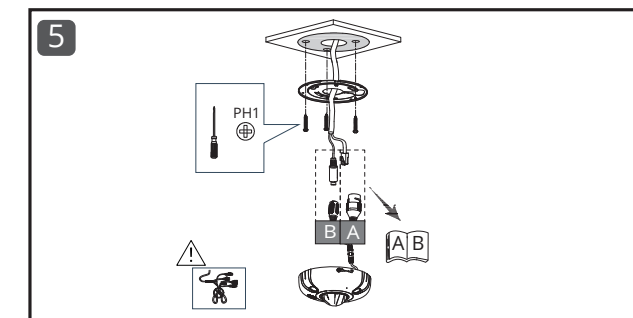
Remove the mounting plate. Detach the camera from the mounting plate by loosening the screw with the provided Allen wrench.



Pull out the camera's DC power connector and PoE connector. Install the mounting plate in the desired location.

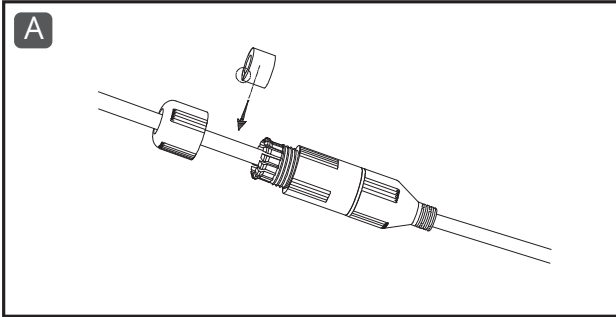


Pull each wire through the cable opening and connect. Next, resecure the mounting plate. See optional procedures A and B to create a more secure attachment for these components.

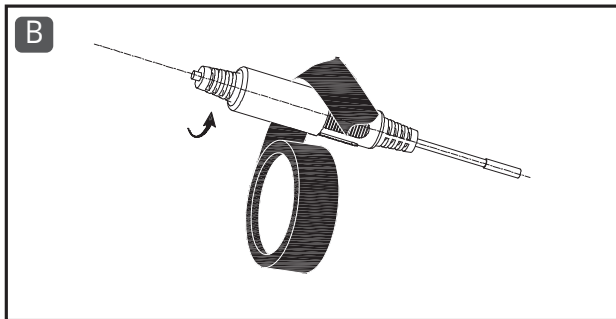


Fisheye Camera Quick Start Guide

Install a protective cover on the cap of the PoE connector before connecting the two wires.



Wrap the camera's power cable with electrical tape to ensure a secure connection and protect it from water.



Remove the recyclable protective film and dispose of it.

